



SMART IP CAMERA

Quick Operation Guide
V2.0

*Product specifications and appearance are for reference only and are subject to change without notice.

Important Notices

>01<

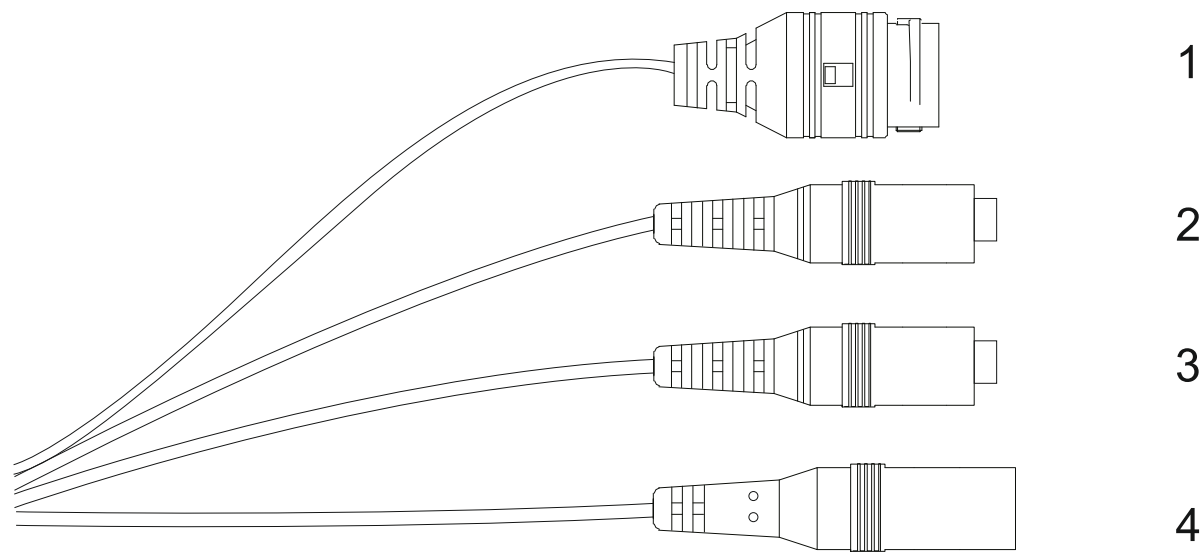
⚠ Safety & Usage Precautions:

- For your security, change the default password immediately after setup to prevent unauthorized access.
- Do not install the camera in damp, dusty areas, or within easy reach of children.
- Use and store the camera only within the specified temperature and humidity ranges.
- Do not disassemble the camera.

⚠ Special Announcement:

- This manual is for reference only. Please refer to the actual product for specifications and appearance.
- The app and device firmware are updated periodically. You may be prompted to upgrade. The manual may not always reflect the latest features.
- Specifications and interfaces may change without notice.
- Some features may vary by model. Please follow your seller's instructions when they differ from this guide.

Interface Introdtion



Item	Interface	Introduction
1	LAN	Power-over-Ethernet port (RJ-45) for both power and data.
2	Audio In	Connector for an external microphone.
3	Audio Out	Connector for an external speaker.
4	DC In	12V DC power input.

3. Network Configuration

>04<

3.2 Login via the Web Interface

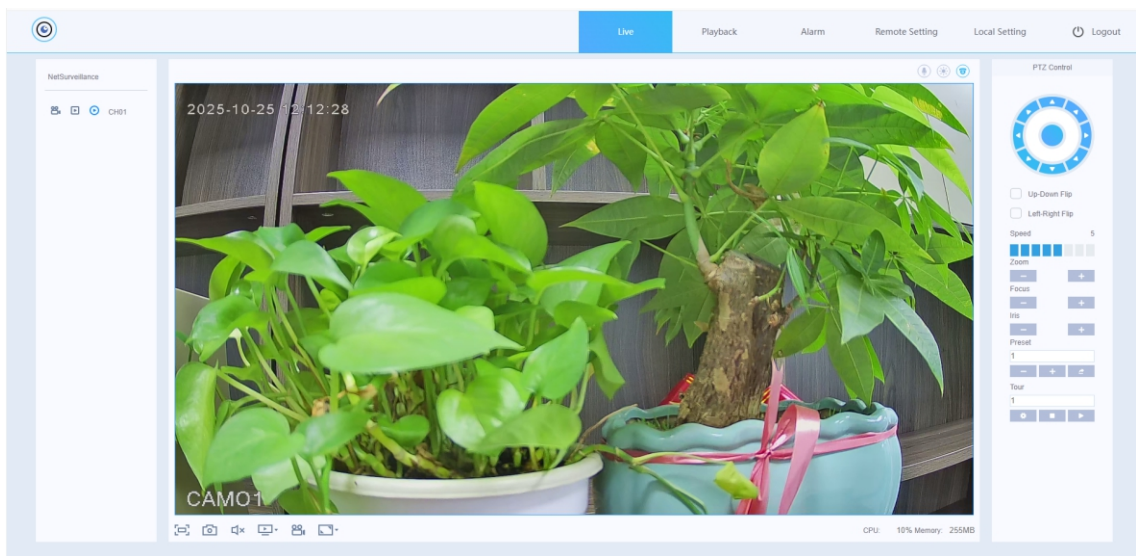
Step 1: Open your browser and enter the camera's default IP address: 192.168.1.10.

Step 2: Click [Download Control] if prompted, then install the plug-in as instructed. After installation, the login page appears. Default credentials are below. Click [Login].
[User Name] : admin
[Password] : (leave this field blank)



*Note: If using Internet Explorer, ensure the security settings allow required components: Internet Options > Security > Custom level > ActiveX controls and plug-ins → set the necessary items to Enable.

Step 3: Click [OK] after you choose the bit stream, then enter live view. Interfaces as below:



*Note: Interfaces may vary by model. The actual product interface prevails.

1. Unpacking Check

>02<

After opening the box, verify the camera and accessories. If anything is missing or damaged, please contact your local seller promptly.

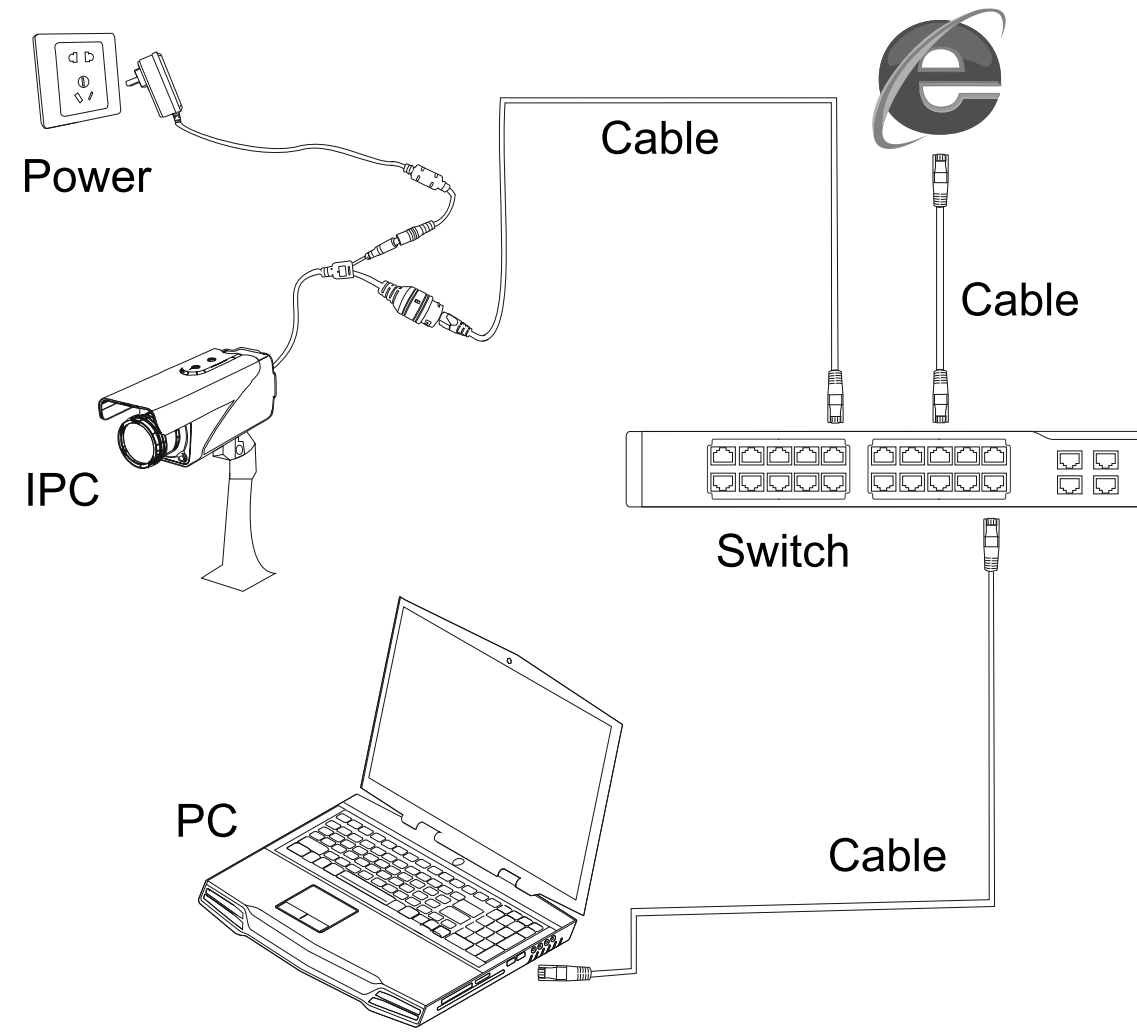
Item	Description	Number of Pieces
1	Cofe IP Camera	1pc
2	User Manual	1pc

*Note: Accessorioies may differ by model.

2. Startup and Initialization

Step 1: Connect the camera to the LAN using a standard Ethernet cable. If using a PoE switch, the network cable provides both data and power.

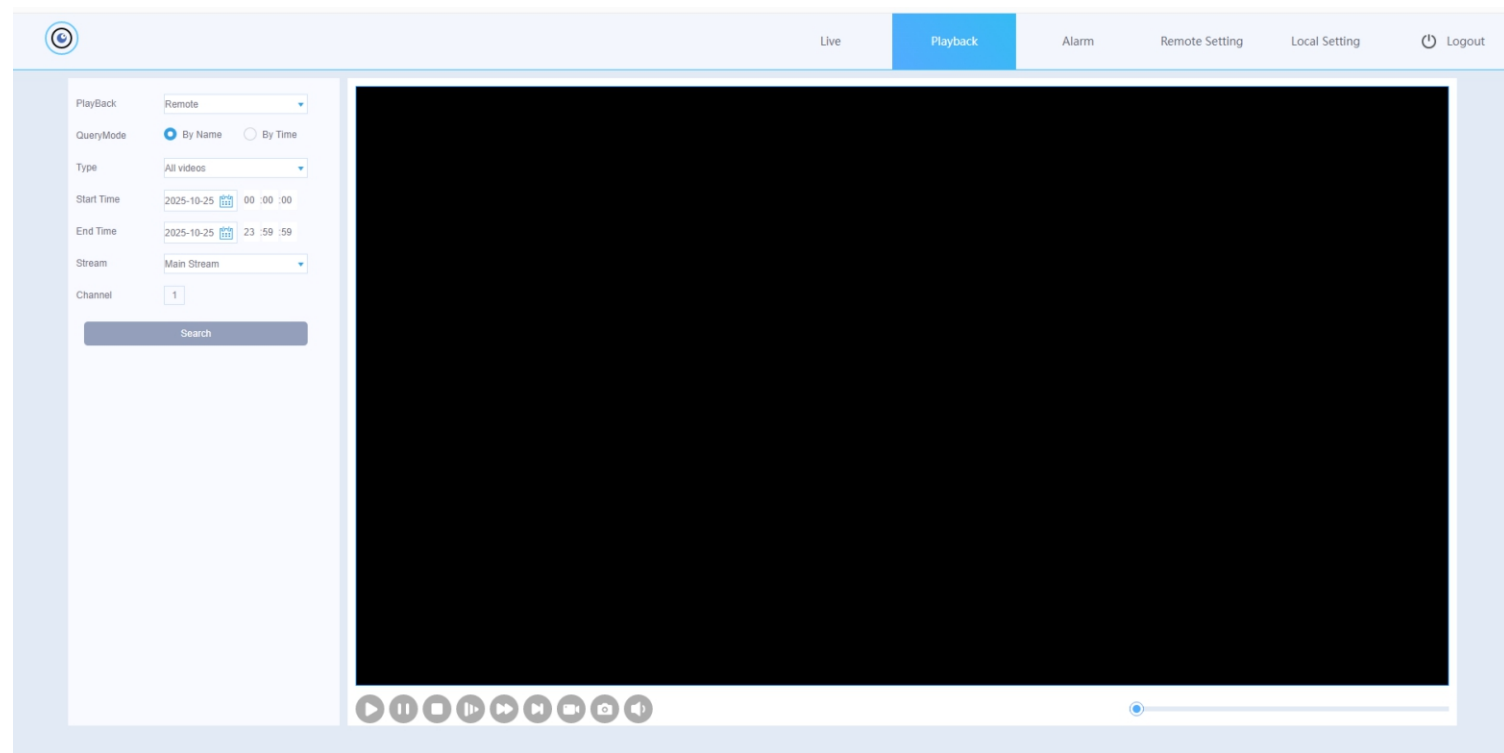
Step 2: If your switch model is not PoE, connect the 12V DC adapter to the DC in power port. Apply power only after all cables are connected.



5. Video Playback

>06<

Right-click [Device Config.]>[Record]>[Playback]. The playback settings interface will appear, as shown in the image below. Choose the type of recording video you want to play and click [Search].

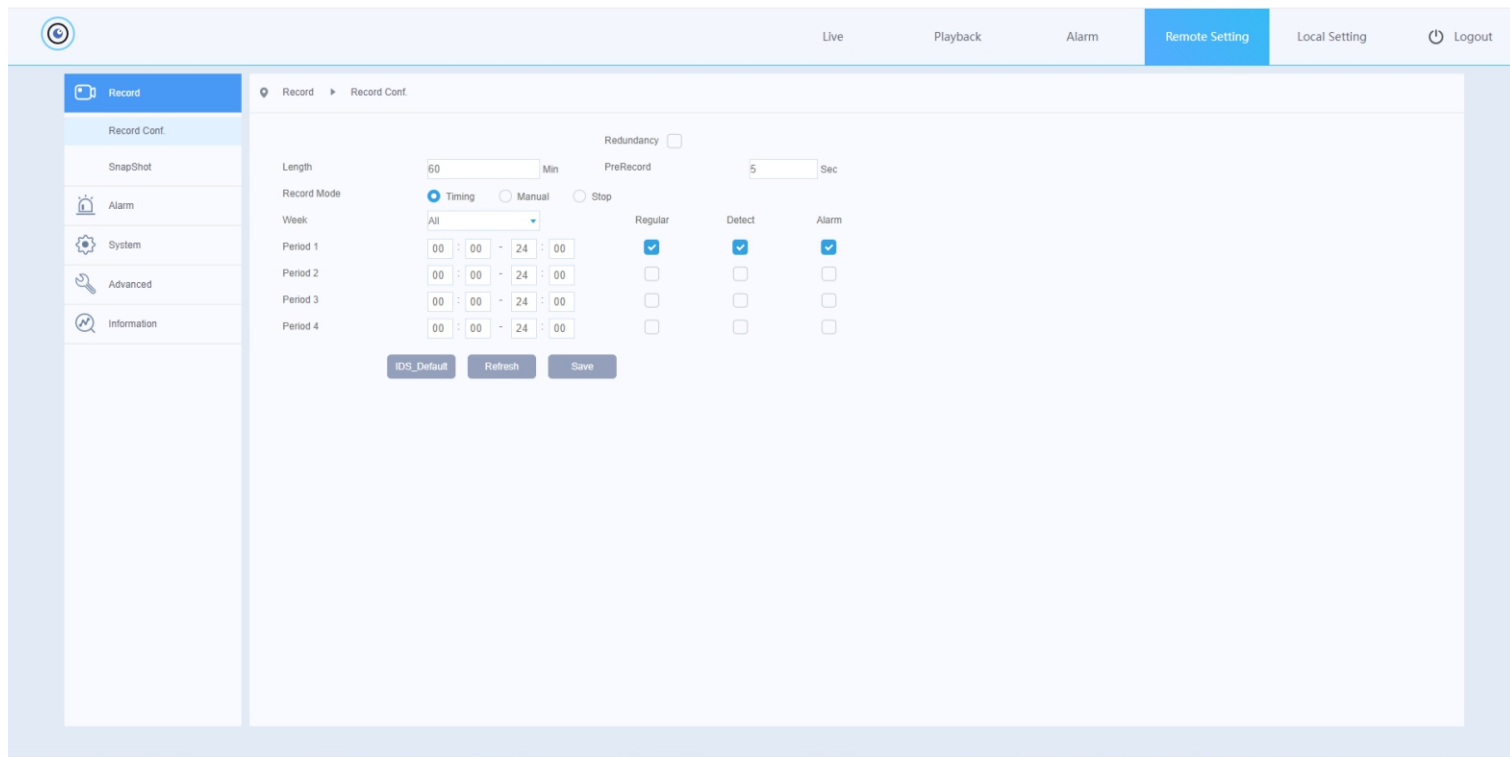


[**Playback**]: Select Local to play recordings from the NVR's hard drive, or Remote to play from a network camera's stored video.
[**Query Mode**]: Search for recordings By Time or By Name (e.g., a specific filename).
[**Type**]: Filter recordings by the event that triggered them, such as Regular, Detect, or Alarm.
[**Begin/End**]: Set the specific period to search within.
[**Search**]: Click to find and display all recordings that match your criteria.

4. Record Settings

>05<

To configure advanced recording options, right-click [Device Config.]> [Record]> [Record]. The recording settings interface will appear, as shown in the image below.



[**Channel**]: Choose the camera channel to configure.
[**Length**]: Set the maximum length for each video file (default: 60 minutes).
[**Record Mode**]: Set the recording mode to Timing (scheduled), Manual, or Stop (model dependent).
[**Period**]: Define the start and end times for scheduled recording.
[**Record Type**]: Set the recording to trigger for Regular (continuous), Motion Detection, or Alarm events (model dependent).

3. Network Configuration

>03<

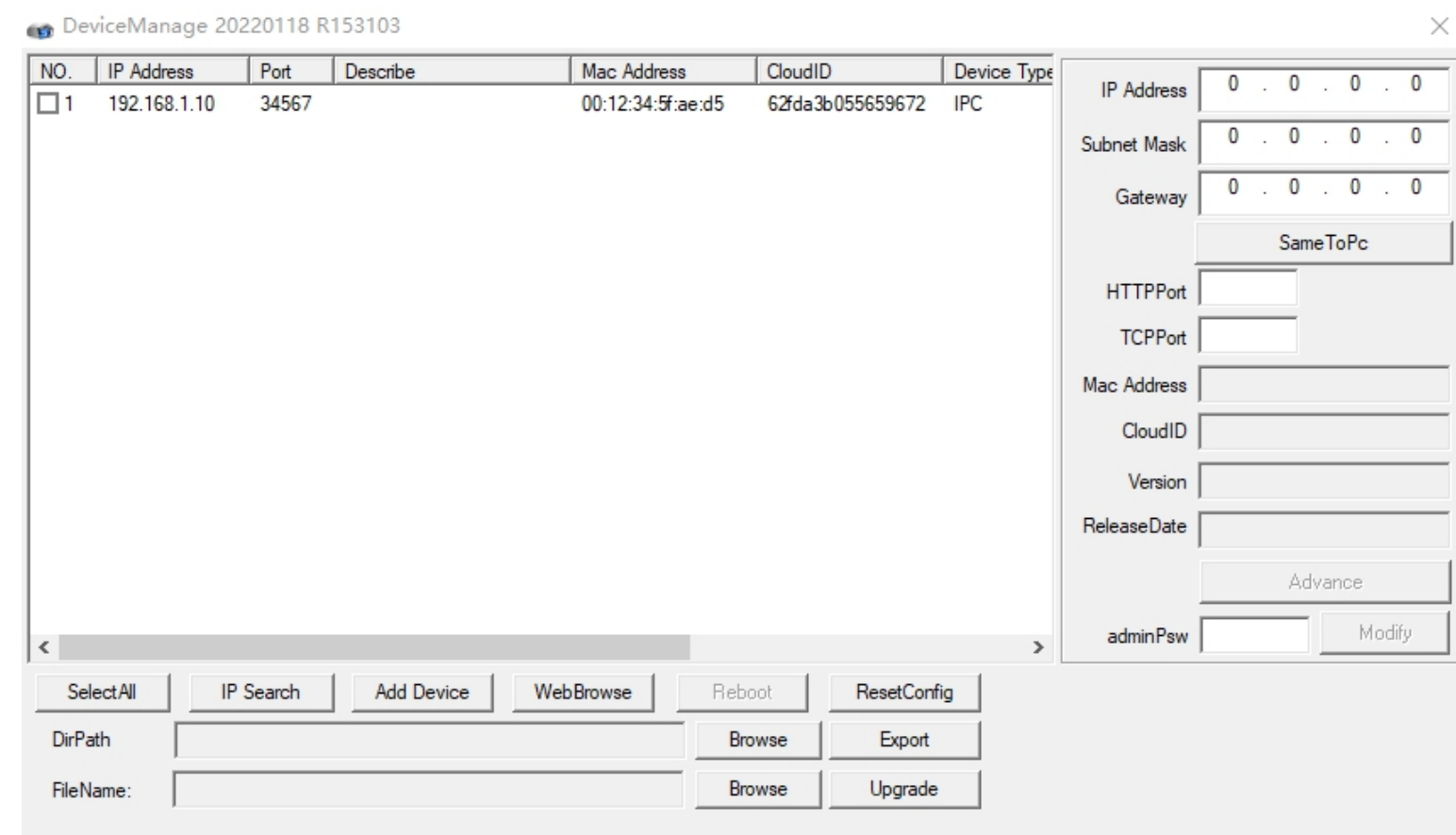
The IP camera ships with a factory-default IP address: 192.168.1.10. Set a valid IP address for each camera before commissioning. To ensure stable network access, plan the available IP ranges according to your local network environment. Do not use network or broadcast addresses (e.g., 192.168.1.0 or 192.168.1.255).

3.1. Modify the IP Address

The camera connected by wired LAN can use DeviceManage to discover and modify its IP address. This guide uses DeviceManage as an example. You can also log in via the web interface and change the IP in the network settings.

Step 1: Please contact your seller for the tool software DeviceManage. Install it following the prompts.

Step 2: Double click DeviceManage and click [Search]. Interface as below:



Step 3: Select the camera to be modified from the list on the left. On the right, set [IP Address], [Subnet Mask], and [Gateway]. You may click [Same to PC] to copy your computer's subnet automatically, which helps avoid complex settings.

Step 4: Click [Modify] to apply the changes, then make sure to save.

6. Supporting Softwares

>07<

To provide a more convenient user experience, we offer supporting softwares. This allows for the centralized management and unified operation of your cameras through various methods. After registering and logging in, you can add devices to view live video and manage them all from one place.

PC Client Software

For advanced features and multi-device management, use the dedicated Video Management System (VMS) software. Please contact your local supplier or installer to obtain the software and installation instructions.

Mobile App

To monitor your system on a smartphone, download the official mobile app "Cofe Online" from the Google Play Store (Android) or Apple App Store (iOS). Alternatively, scan the QR code provided below to download the app.



Cofe Online

